

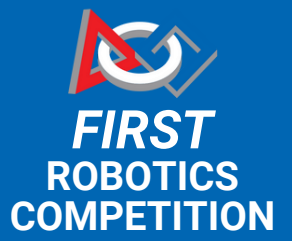
**WINNER**

**2025**

**ORLANDO REGIONAL**

# S.P.A.M. WEEKLY

Week 12: 3/23/25  
- 3/30/25



**FIRST IMPACT AWARD**

**2025**

**ORLANDO REGIONAL**

## Week Twelve

There are 3 days left until we leave for the South Florida Regional! There is still a lot to do. Make sure you have submitted your lunch order forms and have completed all the testing you need to be eligible for your competition roles. From Monday until Wednesday, we will be finishing up the last preparations for SF. See the admin table to make sure you have everything you need to go to SF (lunch order, tests, team shirt, etc).

P.S. please come help make buttons

## MECHANICAL



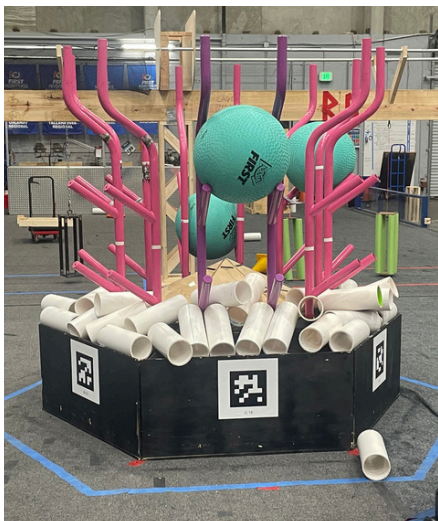
### Progress

This week, the mechanical crew has worked on improving many features of the robot, including climbing, descoring algae, intaking, and arm actuation. The mechanical team is working tirelessly on the new intake and they plan to put it on blackberry to fully test the strength and function of the intake.

### Next Week's Goals

Our main goal for this week is to finish building the new intake and fix issues as they come.

## PROGRAMMING



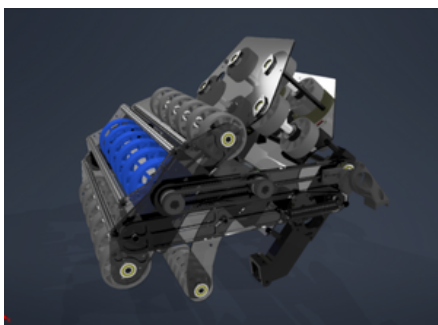
### Progress

This week, the programming team has spent time fine tuning the robot's accuracy and performance. Anemone's drive speed has increased and our path-tracking accuracy has improved as well. Other mechanisms such as the elevator arm, elevator, and intake have been sped up and now we can score more LIs than ever before!

### Next Week's Goals

4 CORAL AUTO AT SF!!!

## CAD



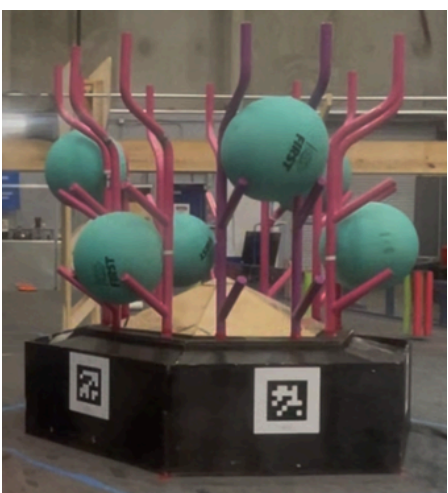
### Progress

This week we have taken all of the information we learned from our coral intake to design a brand new one.

### Next Week's Goals

Update new intake

## FIELD BUILD



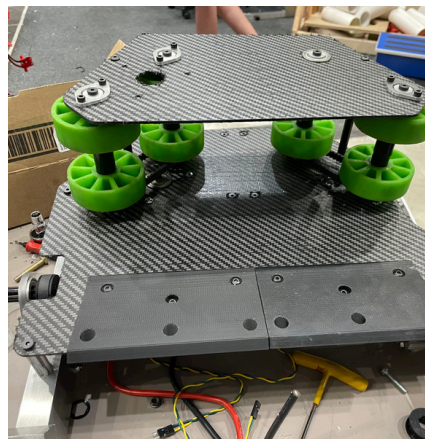
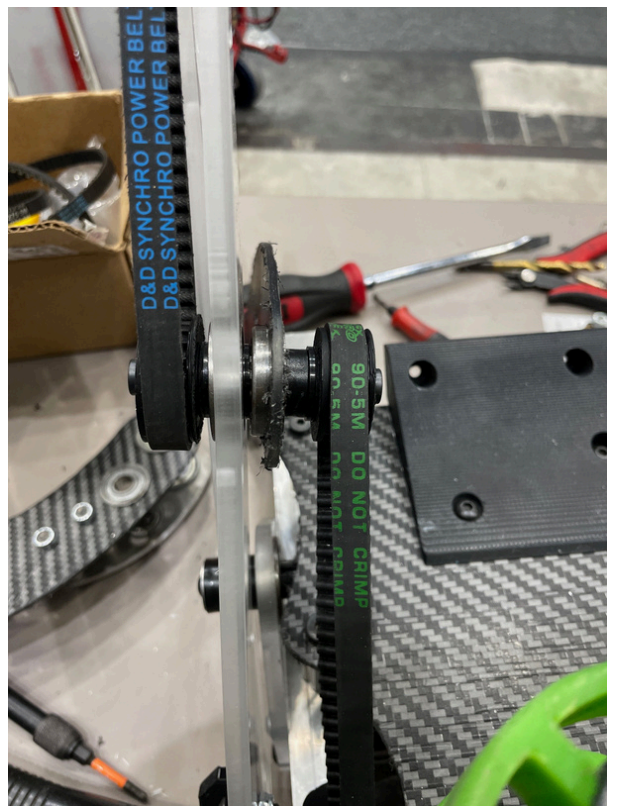
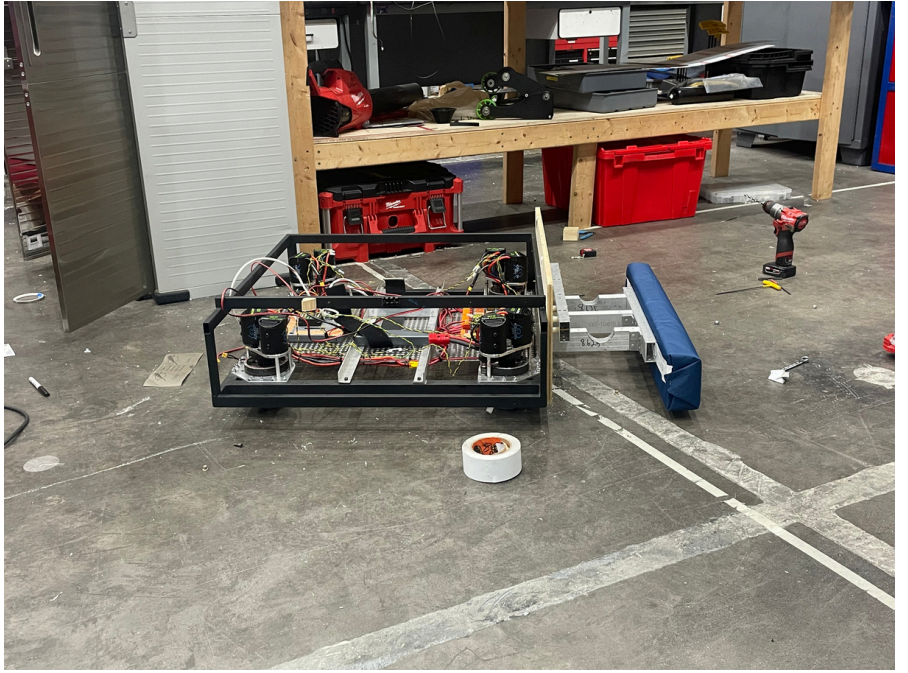
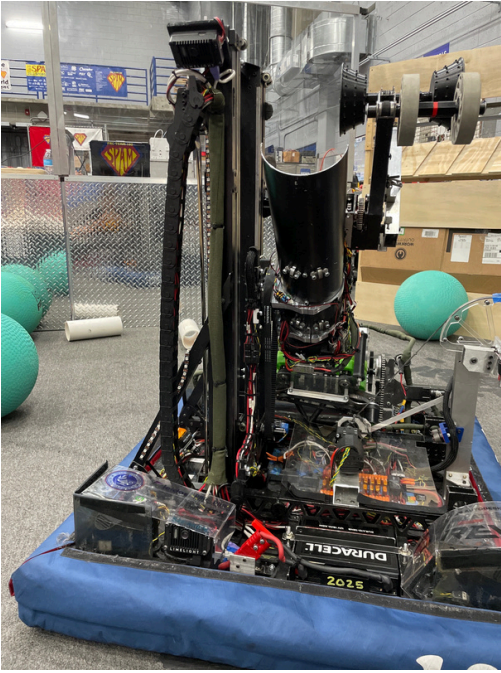
### Progress

The field building team has made significant improvements on the reef. We received 2 real reef branches, which replaced our least accurate branches. The team also took apart the reef and made adjustments to the base so that the rest of the reef branches are more accurate/straight. Half of the center of the reef has also been added.

# BLACKOUT

Attention S.P.A.M.

At the SF Regional, we will be doing a blackout during playoffs. More black capes are being made for students. So wear your blue team shirt on **THURSDAY** and **FRIDAY** and the black fun shirt on **SATURDAY**.



Go check out our new website!!  
Made by Elizabeth Marini:  
<https://www.spamrobotics.org/>

20

April Meetings

25

Mon

Tues

Wed

Thurs

Fri

Sat

Sun



3  
SOUTH FLORIDA  
REGIONAL



16

17

18

19

20

FRC WORLD CHAMPIONSHIPS



Our Schedule is also on our [website](https://www.spamrobotics.org/)!!

# THANK YOU

Made by Zach & Isabella